

Loading and Transporting Heavy Equipment

Over the last 10 years, Risk Pool members have experienced more than 1,500 trailering-related claims, resulting in over \$8 million in losses. Preventing accidents caused by improper loading or tie-down of equipment and materials is the responsibility of both operators and supervisors. Failure to adhere to standards can lead to accidents that result in equipment loss or, worse, injury to employees or the traveling public.

These points are safety reminders when loading and transporting equipment:

1

Plan Ahead: Before loading equipment onto trailers or trucks, carefully plan the loading process. Consider factors such as the weight and dimensions of the equipment, the capacity of the transportation vehicle, and the route to be taken.

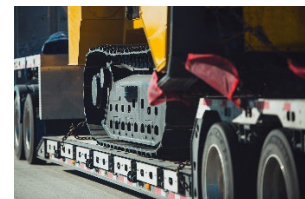


2

Perform Regular Inspections: Conduct pre-trip inspections of both the equipment being transported and the transportation vehicle to ensure they are in good working condition. Check for signs of wear or damage to tires, brakes, lights, and securing devices.

3

Selecting Proper Transport Equipment: Select the proper truck and trailer and be mindful of weight limits and regulations. Know the trailer load limit and the total weight of the equipment, including fluids, attachments, etc. Overloading trailers or trucks compromises stability and increases the risk of accidents.



4

Secure the Load: Loaded equipment should be securely fastened using chains, straps, or tie-downs with a minimum Working Load Limit (WLL) of 6,600 lbs. The tie-down devices must be capable of containing a specified percent of the cargo gross weight when force is placed in the forward (80%), rearward (50%) and lateral (side) (50%) directions.



5

Maintain Safe Speeds: When driving loaded vehicles, adhere to safe driving speeds and maintain a safe following distance from other vehicles. Slow down when navigating corners or uneven terrain to prevent loss of control and potential accidents.

LEARN MORE WITH THESE ADDITIONAL RESOURCES:

Resources

- [TMLIRP Multimedia Library](#) Transporting Construction Equipment, Disk 157
- YouTube Video- UT Arlington TxLTAP [Safety Tips when Loading Heavy Equipment](#)
- TDI: [Making roadways safer one trailer at a time](#)
- TDI: [Light-Duty Trailer Safety Fact Sheet](#)